

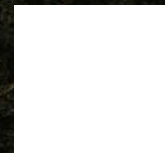
Skelf Adventure Activity Sheet



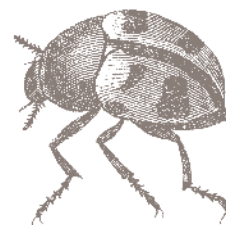
The Castle Howard Skelves are faerie-like creatures who inhabit the island. If you were a Skelf, what would your magical power be?



Venture across the rope bridge, how many steps can you count along the way?



What bugs can you spot in and around Skelf Island Adventure Playground?



Draw yourself as a Castle Howard Skelf!



When you have finished exploring Skelf Island, visit the Atlas Fountain. How many mermen can you see?



Sign up to our newsletter to keep up-to-date with our news and latest events
castlehoward.co.uk



What can you spot on the Great Lake?

The Great Lake is home to a wide variety of birds. See what you can spot out on the water and on the lake banks!



Canada Goose A large goose, with a distinctive black head and neck, and large white throat patch.



Coot All-black and larger than its cousin, the moorhen. A distinctive white beak and 'shield' above the beak which earns it the title 'bald'.



Cormorant A large and conspicuous waterbird with an almost primitive appearance. It is often seen standing with its wings held out to dry.



Great Crested Grebe An elegant waterbird with ornate head plumes, on land they are clumsy because their feet are so far back on their bodies.



Greylag Goose The ancestor of most domestic geese, the greylag is the largest UK native goose.



Grey Heron Tall, with long legs and a long beak. They stand with their neck stretched out, looking for food, or hunched with their neck bent over.



Little Grebe A small grebe which often appears to have a 'fluffy' rear end. In summer it has a bright chestnut throat and cheeks.



Mallard The male has a dark green head, yellow bill, is purple-brown on the breast and grey on the body. The female is brown with an orange bill.



Moorhen Red and yellow beak and long, green legs. Seen close-up they have a bluish-black belly, with white stripes, dark brown back and wings.



Mute Swan Large white water bird with long S-shaped neck, and an orange bill with black at the base of it.



Teal Males have chestnut-coloured heads, broad green eye-patches, grey flanks and a black-edged yellow tail. Females are mottled brown.



Tufted ducks Black on the head, neck, breast and black and white on the sides. It has a small crest and a yellow eye.